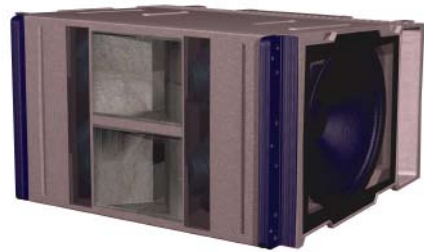
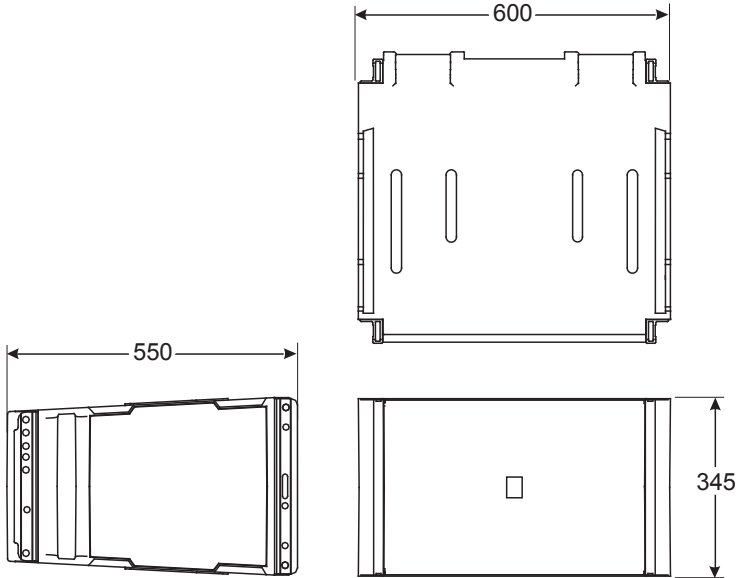


Linex



System
 Horizontal coverage
 Vertical coverage

 LF1 Rec. AMP Power
 LF2 Rec. AMP Power
 MF Rec. AMP Power
 HF Rec. AMP Power
 Sensitivity (LF/MF/HF)
 Cont. SPL (AES standard)
 Peak SPL (Cont.+6dB)
 LF1 Transducer (pin 1)
 LF2 Transducer (pin 2)
 MF Transducer (pin 3)
 HF Transducer (pin 4)
 Connectors

Linex™
 90 degrees
 Defined by the array
 length and shape
 1200W @ 8ohm
 1200W @ 8ohm
 600W @ 8ohm
 600W @ 8ohm
 98/106/115 dB (1W@1m)
 138 dB
 144 dB
 12"
 12"
 4 x 6,5"
 2 x 1.5" (3" Diaphragm)
 2 x Neutrik NL8 - daisy
 chained
 pin 1 - LF1 @ 8ohm
 pin 2 - LF2 @ 8ohm
 pin 3 - MF @ 8ohm
 pin 4 - HF @ 16ohm
 Carbon fibre composite
 Powder coated steel grills
 IP 54
 600 x 340 x 560 (mm)
 40kg

Enclosure Material
 Grille
 IP rating
 Dimensions (WxHxD)
 Net weight

Technical specs for a 4 cabinet flat array:

System	4 x Linex™
Frequency response	65Hz - 18kHz
Max. calculated SPL cont.	145 dB @ 1m

Technical specs for a 4 cabinets curved array:

System	4 x Linex™
Frequency response	65Hz - 18 kHz
Max. calculated SPL cont.	142 dB @ 1m

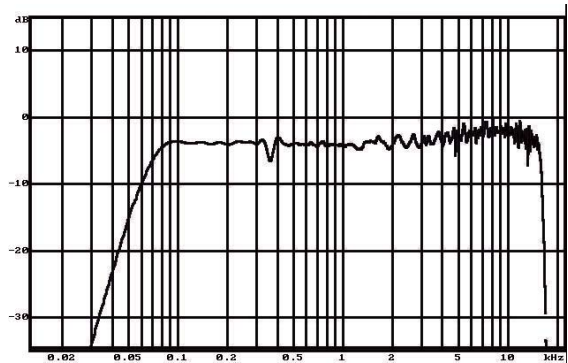


fig1. typical frequency response of a curved Linex™ array